



Janison.

Replay.

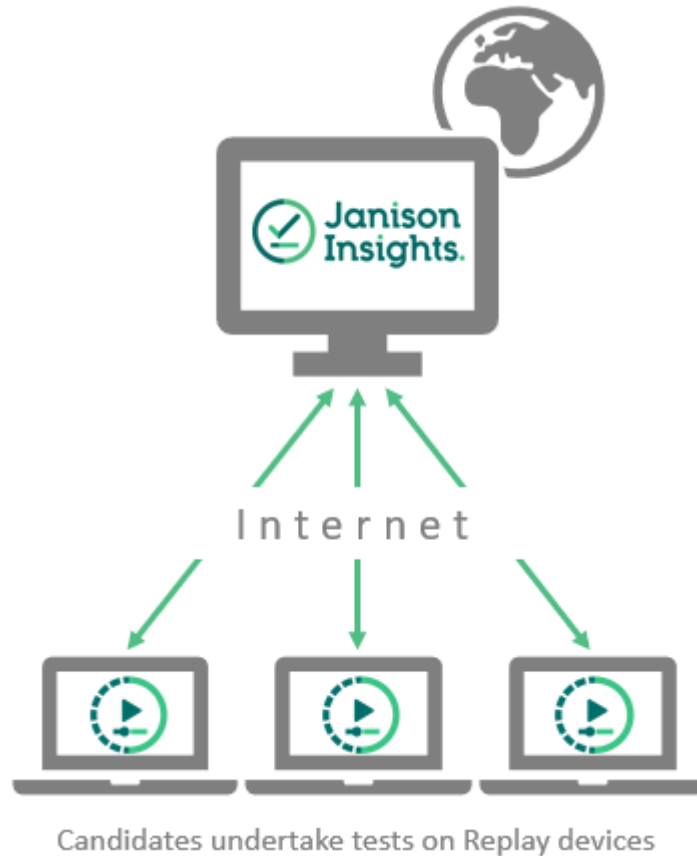
for Windows user guide

Contents.

1	Introduction	2
1.	Installation.....	3
1.1	Install Replay	3
1.2	Allow firewall access.....	4
3.3	Entering ICAS/REACH Assessments URL	5
4.	The student experience.....	6
5.	Remove Janison Replay from devices	7
5.1	Windows 10/11 Removal Instructions.....	7

1 Introduction

Janison Replay (Replay) is a digital test delivery application that allows students to participate in the ICAS and Reach online assessments. Replay locks the device down so that the student can't access anything on their device outside of the app during the test.



🔧 Hardware	💻 Software	🌐 Internet speed
<ul style="list-style-type: none"> • Desktop or laptop computer (Not a tablet or mobile) • Recommended screen resolution: 1024 x 768px • Free disk space: 1GB+ 	<ul style="list-style-type: none"> • PC (Windows 10+) 	<ul style="list-style-type: none"> • Download: 300KB/s • Upload: 250KB/s+

1. Installation

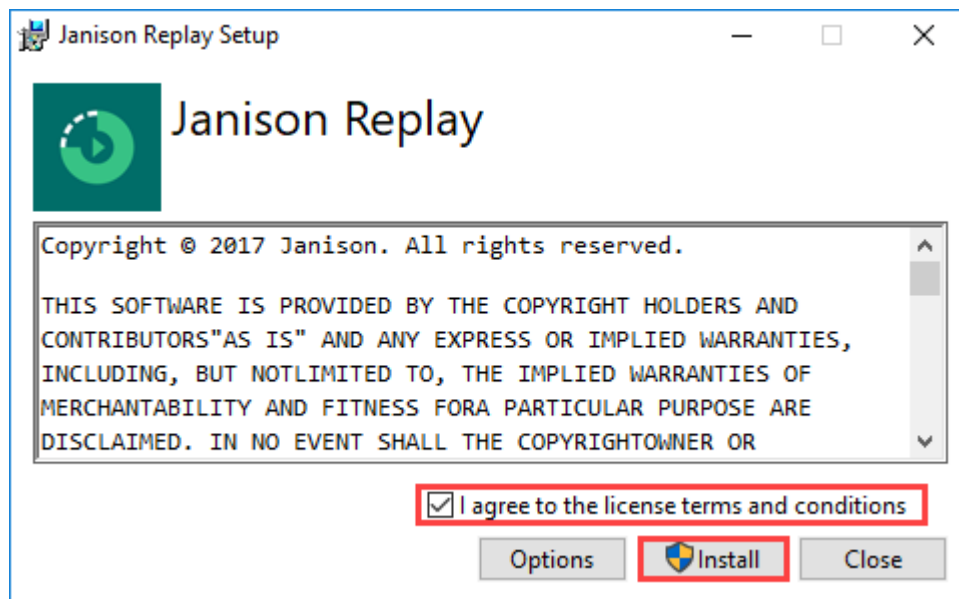
Technical specialists will need to install a copy of the app on each of the student devices.

⚠ Important: If you have installed Replay previously, please uninstall this version and install the new version from our ICAS website (Section 4 of this guide shows how to)

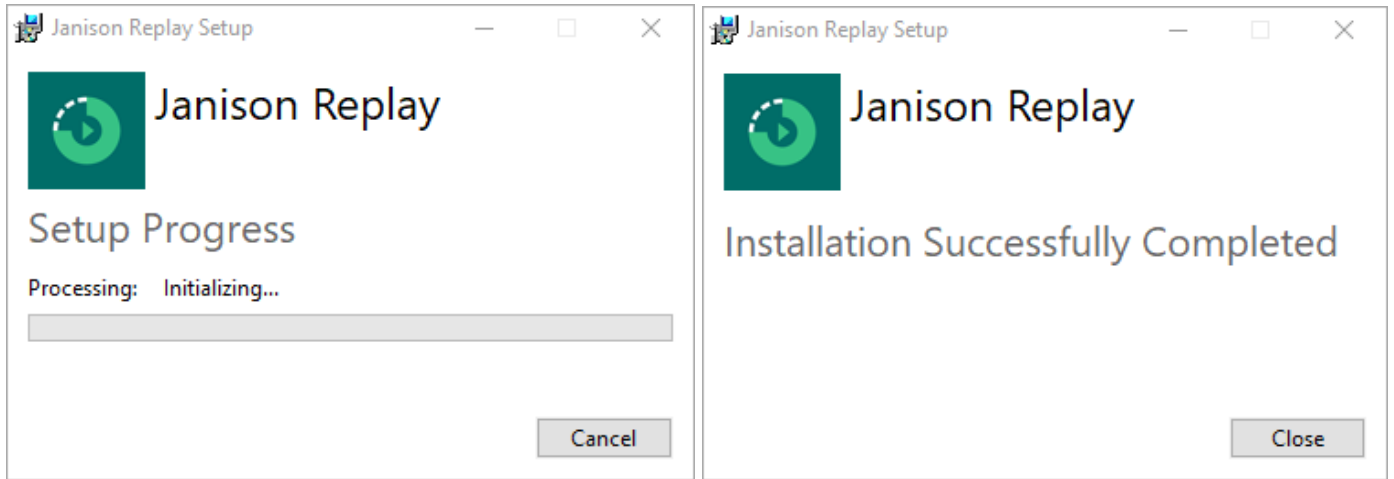
1.1 Install Replay

Next, you need to install the Replay app.

Double Click **Janison Replay v5.8.26.msi**, a setup assistant displays.



If you agree with the license terms and conditions, select **I agree to the license terms and conditions** and select **Install**.



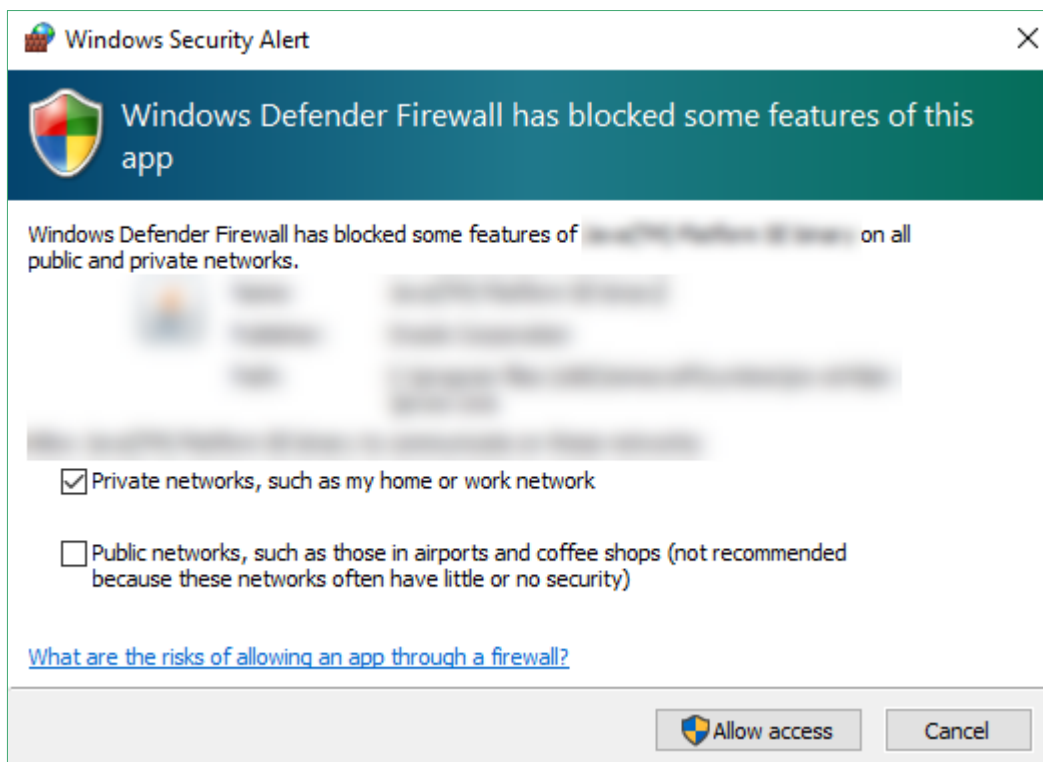
Once Replay has installed, select **Close**. Launch Replay to ensure it loads.



1. Double-click the **Janison Replay** desktop shortcut to launch Replay.

1.2 Allow firewall access

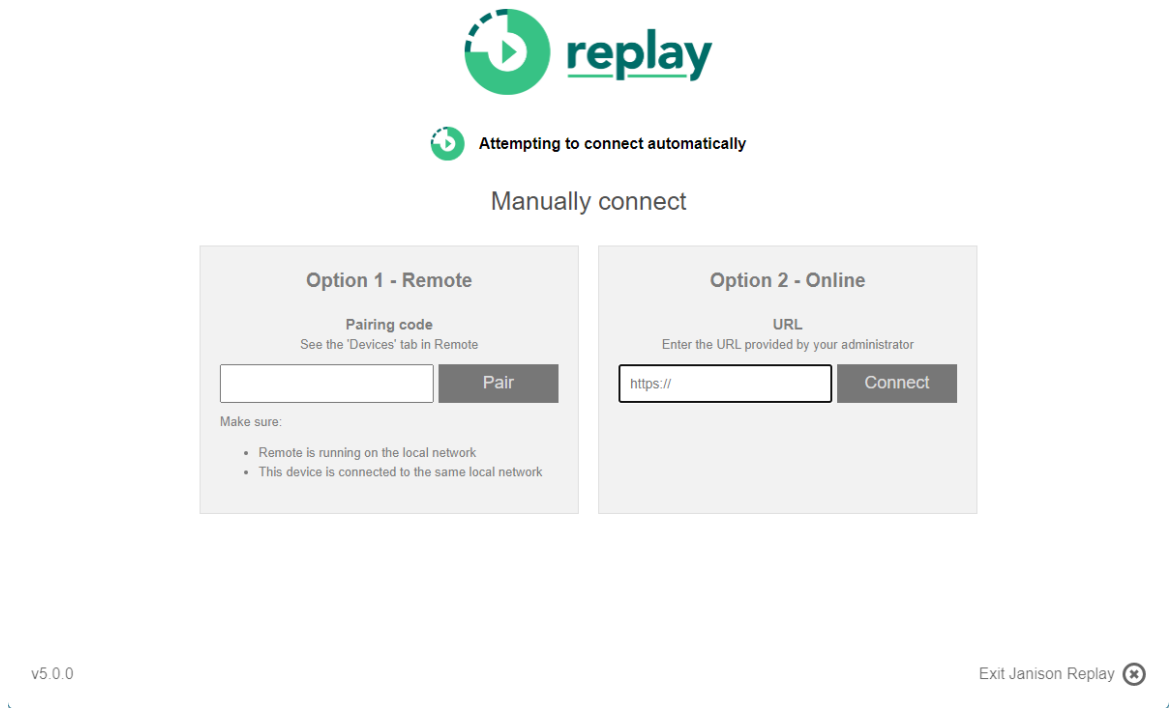
If this is the first time launching Replay on a device, Windows may prompt you to allow Janison Replay to access the internet via the window computer's built in firewall.



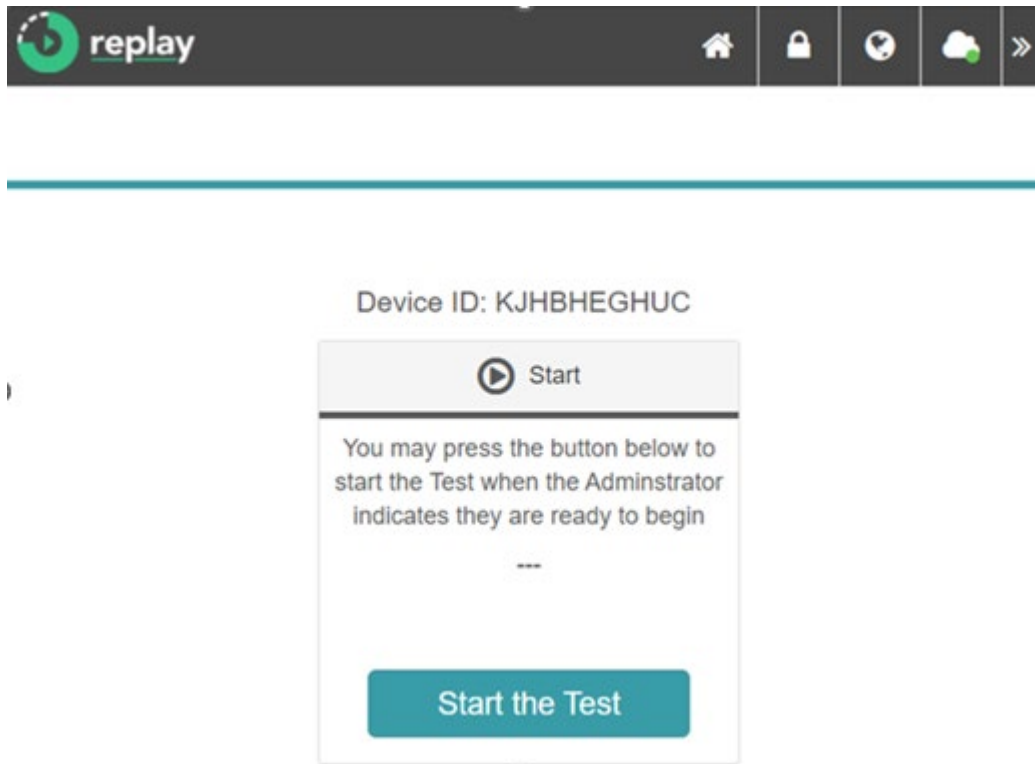
When prompted with the above screen select **Allow access**.

1.3 Entering ICAS/REACH Assessments URL

After Replay is launched for the first time, select **Option 2** Enter URL: icasassessments.janisoninsights.com and select the **Connect** button. (This step is only required once after initial installation)

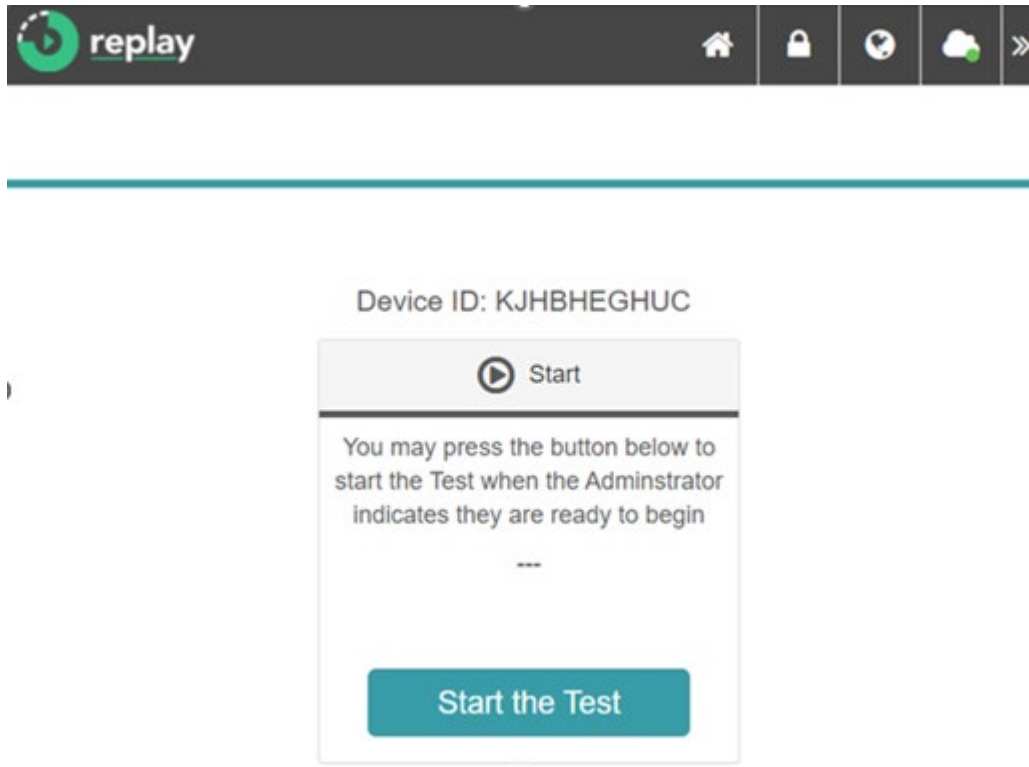


You should see the screen below.

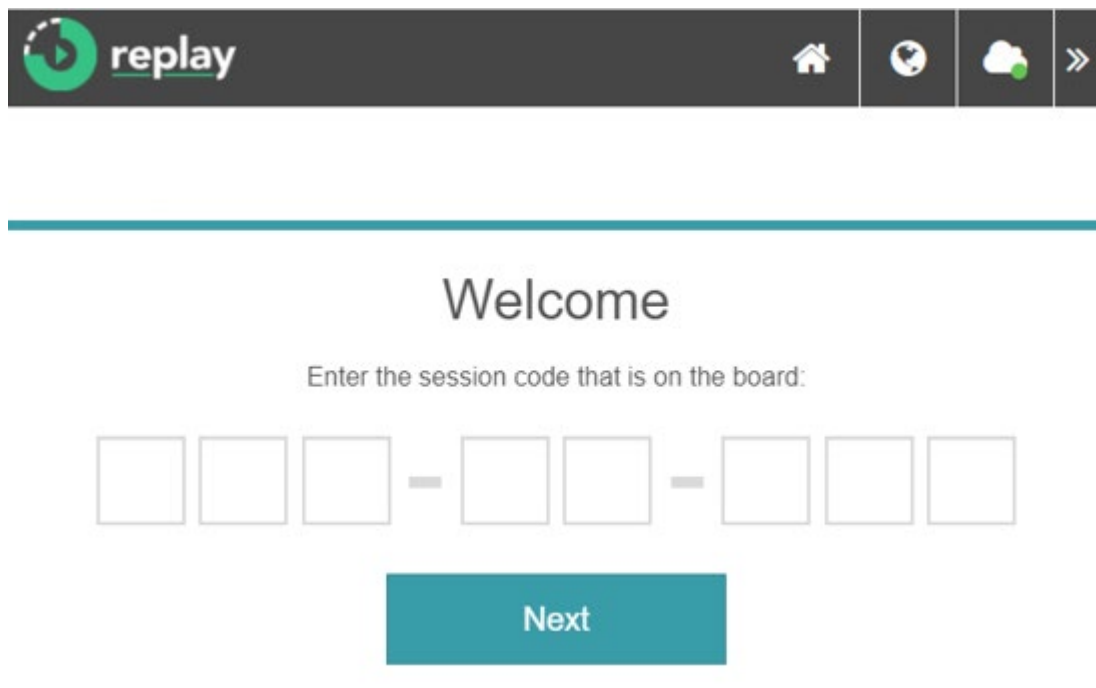


2. The student experience

On the day of the test, launch Replay on each of the student devices.



The student will select **Start the Test**.



They will first need to enter the **Session Code**.

Welcome

Enter the student code that is on your paper slip:

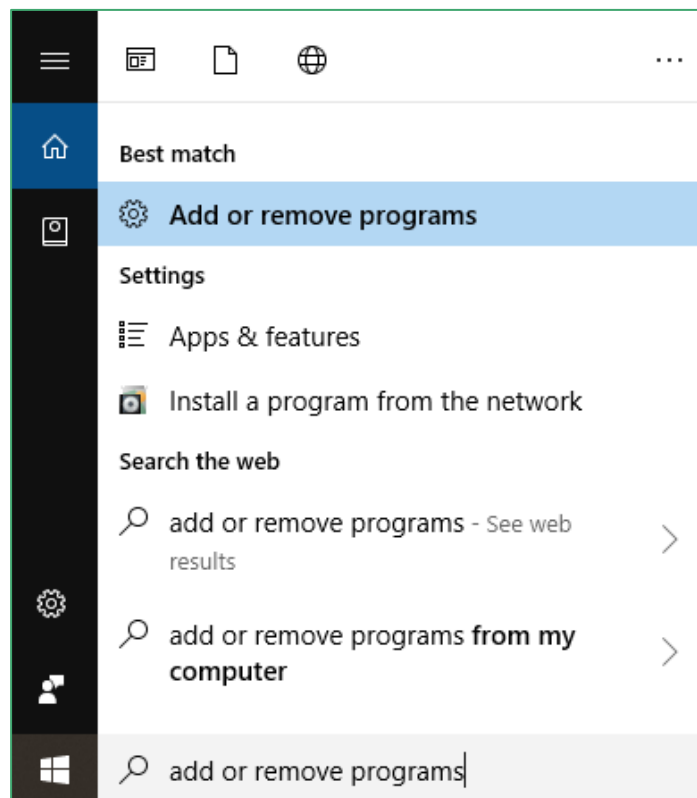
- - -

Next

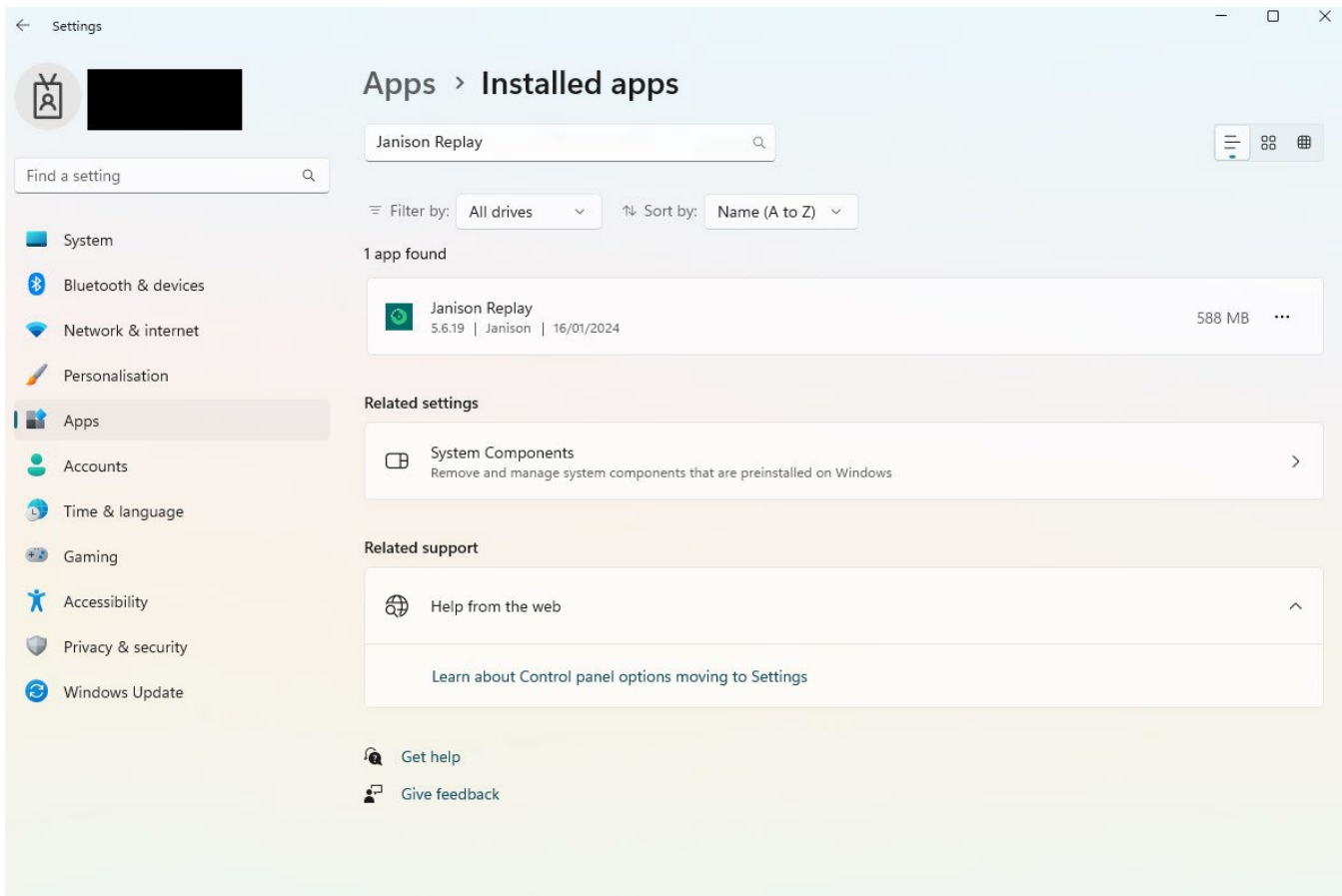
They will then need to enter their unique Student Code.

3. Remove Janison Replay from devices

3.1 Windows 10/11 Removal Instructions

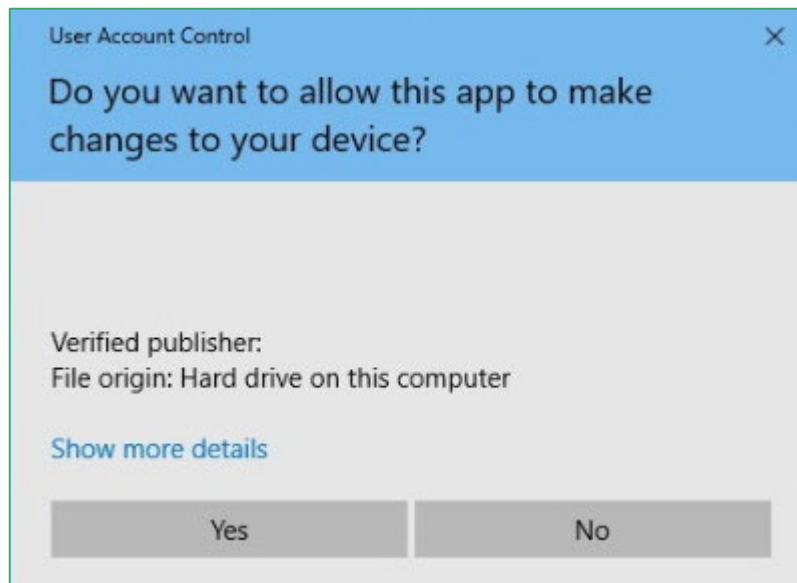


From the start menu open Add or remove programs.

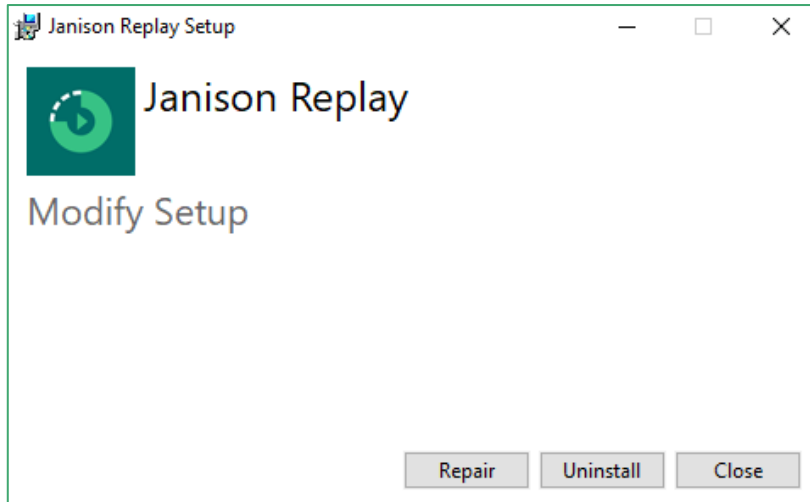


Search for Janison replay.

Select Uninstall.



Select Yes.



Select **Uninstall**.

Replay uninstalls and feedback confirming the uninstall displays.

