



**Janison.**

**Replay.**

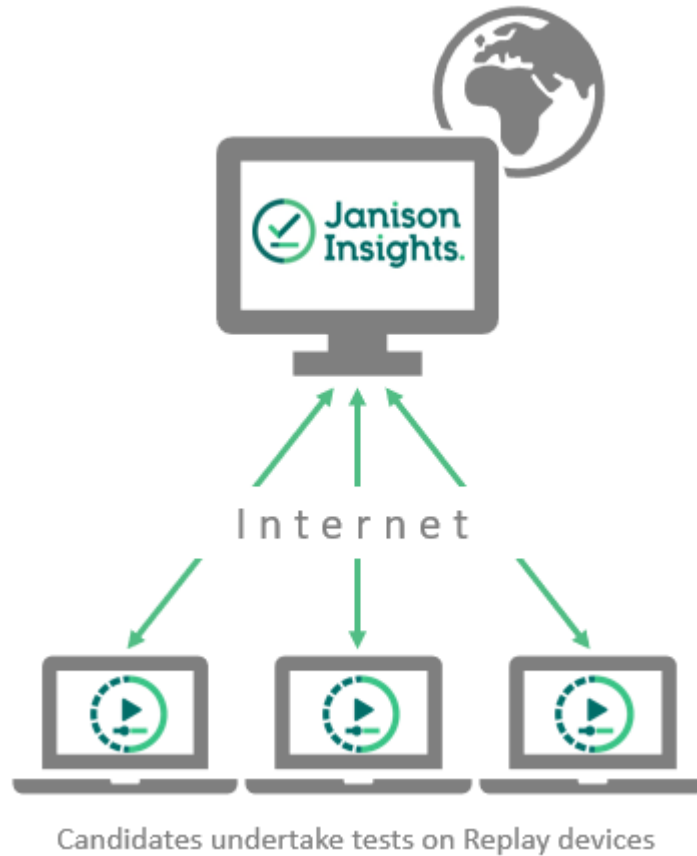
iOS user guide

# Contents.




1. Introduction.....	2
1.1 System requirements for Replay installation .....	2
2. Installing Replay in an iOS device .....	3
2.1 Install Replay .....	3
2.2 Entering ICAS/REACH Assessments URL.....	4
3. The student experience .....	6

# 1. Introduction

Janison Replay is a digital test delivery application that allows students to participate in the ICAS and Reach online assessments. Replay locks the device down so that the student can't access anything on their device outside of the app during the test.



## 1.1 System requirements for Replay installation

 Hardware	 Software	 Internet speed
<ul style="list-style-type: none"><li>• iPad, iPad Air, iPad Pro</li><li>• iPad mini is not recommended due to smaller screen resolution</li><li>• Free disk space: 1GB+</li></ul>	<ul style="list-style-type: none"><li>• iPad OS 16+</li></ul>	<ul style="list-style-type: none"><li>• Download: 300KB/s</li><li>• Upload: 250KB/s+</li></ul>

## 2. Installing Replay in an iOS device

To install and configure Replay on an iOS device:

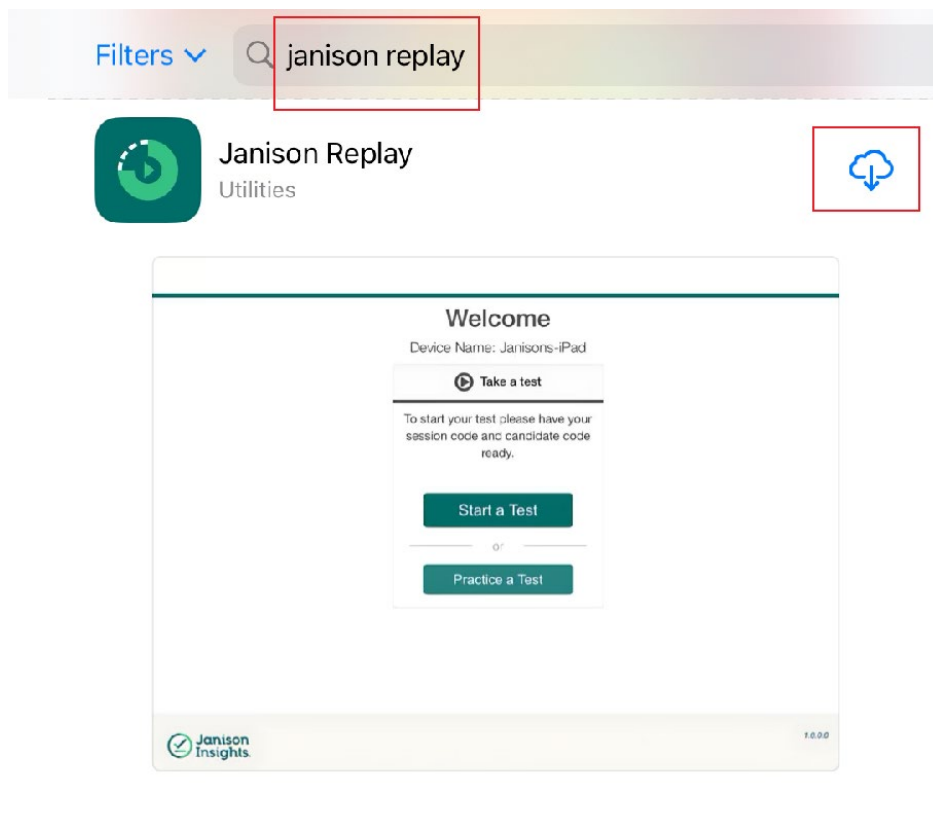
### 2.1 Install Replay

1. Download from the link below from

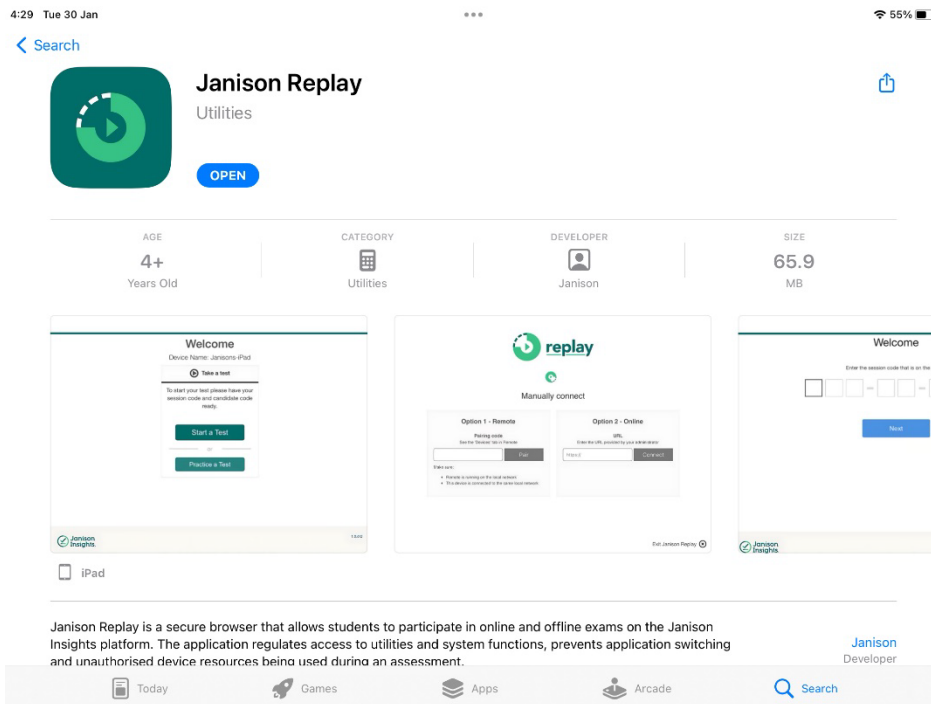
**Apple Store:** <https://apps.apple.com/au/app/janison-replay/id6470965376>

2. Or search on App Store:

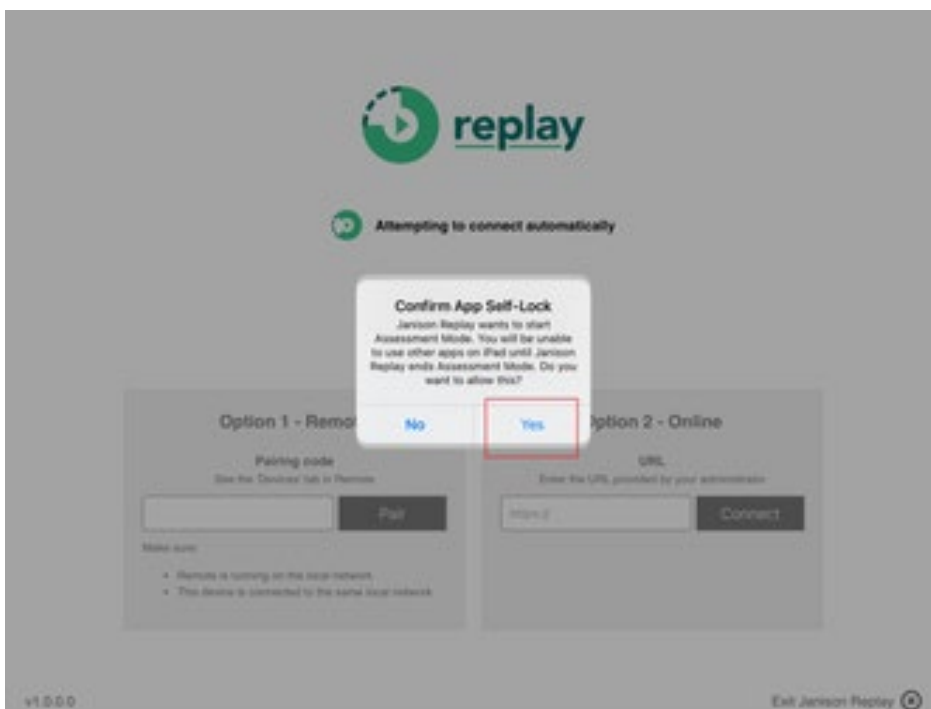
1. Search for **Janison Replay** and then select the **Get/Download** icon.



3. Select **Open** or lanch from home screen to open Janison Replay.




4. Select the **Yes** to lock the device from other apps.



## 2.2 Entering ICAS/REACH Assessments URL

After Replay is launched for the first time, select **Option 2** Enter URL: [icasassessments.janisoninsights.com](https://icasassessments.janisoninsights.com) and select the **Connect** button. (This step is only required once after initial installation)



 Attempting to connect automatically

Manually connect


Option 1 - Remote	Option 2 - Online
<p><b>Pairing code</b> See the 'Devices' tab in Remote</p> <input type="text"/> <input type="button" value="Pair"/>	<p><b>URL</b> Enter the URL provided by your administrator</p> <input type="text" value="https://"/> <input type="button" value="Connect"/>
<p>Make sure:</p> <ul style="list-style-type: none"><li>• Remote is running on the local network</li><li>• This device is connected to the same local network</li></ul>	

v5.0.0

Exit Janison Replay 

You should see the screen below.

Device ID: KJHBHEGHUC

 Start

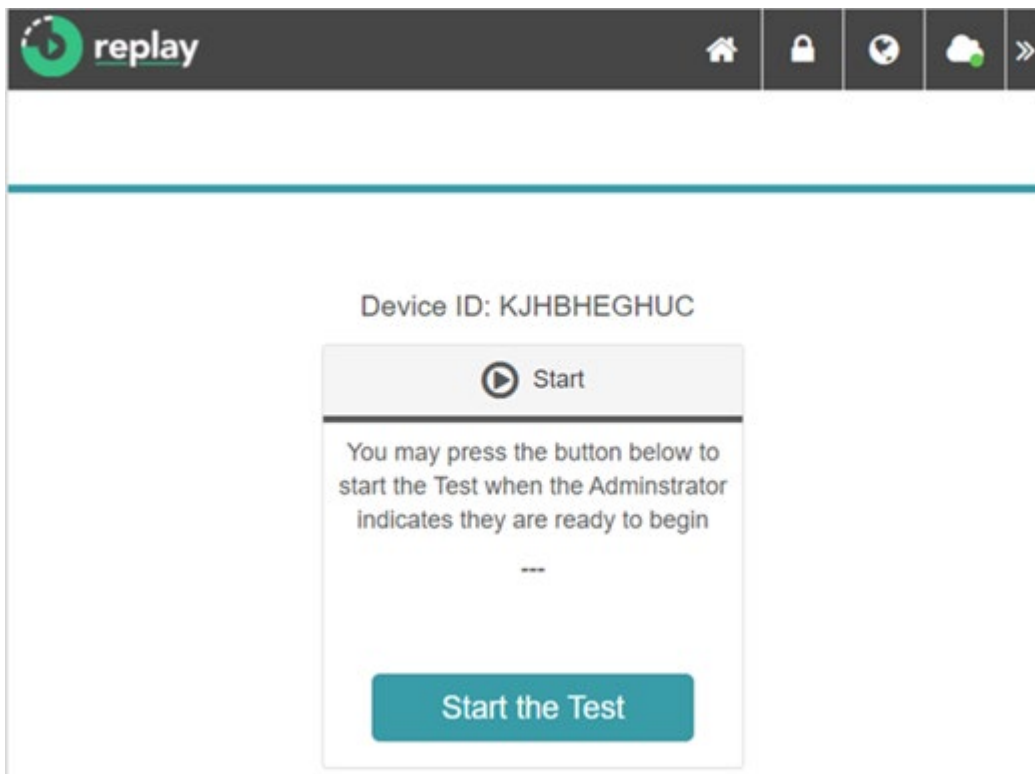
You may press the button below to start the Test when the Administrator indicates they are ready to begin

---

Start the Test

### 3. The student experience

On the day of the test, launch Replay on each of the student devices.



The student will select **Start the Test**.

**Welcome**

Enter the session code that is on the board:

-   -

They will first need to enter the **Session Code**.

**Welcome**

Enter the student code that is on your paper slip:

-   -   -

They will then need to enter their unique **Student Code**.